

VCSE and NHS in Mental Health: working together in South West London

8 March 2024



Ice breaker



Context and the journey so far...

Sarah Burns, Croydon Voluntary Action

Sara Milocco, Voluntary, Community, Social Enterprise (VCSE) Alliance
Director – South West London



The Journey so far - developing our VCSE Alliance - codesigning our approach



Classification: Official
Publications approval reference: PAR905

Building strong integrated care systems everywhere

ICS implementation guidance on partnerships with the voluntary, community and social enterprise sector

NHS England and NHS Improvement may update or supplement this document during 2021/22. Elements of this guidance are subject to change until the legislation passes through Parliament and receives Royal Assent. We also welcome feedback from system and stakeholders to help us continually improve our guidance and learn from implementation. The latest versions of all NHS England and NHS Improvement guidance relating to the development of ICSs can be found at [ICS Guidance](#).

Version 1, 2 September 2021

Building a voluntary sector alliance across southwest London

An analysis of existing networks and structures, their influence and potential

Lev Pedro, Emma Baylin, Simone Hensby and John Gillespie
March 2022

VCSE Business case

For dedicated resource to support the development and work of the SWL VCSE alliance

June 2022

5,565 organisations			
Croydon	1,900	Kingston	575
Wandsworth	1,390	Merton	400
Richmond	800	Sutton	400

Building a voluntary, community and social enterprise sector alliance in South West London: what will it look like?

Feedback from a series of workshops with voluntary organisations in Croydon, Kingston, Merton, Richmond, Sutton and Wandsworth

Lev Pedro, Emma Baylin and Aimie Cole
May 2023



The Alliance's Leadership group

1. Steve Phaure (Sarah Burns), **Croydon Voluntary Action**
2. Simon Breeze, **Community Action Sutton**
3. Tony Molloy, **Merton Connected**
4. Jason Edgington, **Wandsworth Care Alliance**
5. Bruno Meekings, **Richmond CVS**
6. Sanja Djeric Kane (Emma Hill), **Kingston Voluntary Action**
7. Anita Maullin, CEO **Volunteer Centre Sutton** (young people) - Sutton
8. Cathy Maker – CEO, **Ruils** (long term conditions) - Richmond
9. Chas De Swiet - CEO, **Sound Minds** (mental health) - Wandsworth
10. Jackie Watkins - CEO **Tooting and Mitcham Community Sports Club** (young people) - Merton
11. Sanjay Gulati, CEO **Age UK Croydon** (older/frail people) - Croydon
12. Jason Lamont, CEO **Kingston Centre for Independent Living** (workforce development) - Kingston



Our South West London VCSE Alliance



The VCSE Alliance Director role is an observer of the **Integrated Care Board**, a member of the **Integrated Care Partnership** and is also invited to sit on other sub-committees as part of SWL governance structures.

Sara Milocco

07540 720103

Sara.Milocco@cvalive.org.uk

Our South West London VCSE Alliance

SWL VCSE Leadership Group	Croydon Voluntary Action	Kingston Voluntary Action	Merton Connected	Richmond Community Voluntary Sector	Community Action Sutton	Wandsworth Care Alliance
	Frontline VCSE leader (Croydon / Older people)	Frontline VCSE leader (Kingston / Workforce)	Frontline VCSE leader (Merton / Children Young people)	Frontline VCSE leader (Richmond / Long term conditions)	Frontline VCSE leader (Sutton / Children Young People)	Frontline VCSE leader (Wandsworth / Mental Health)

Structures and Forums at Place	Croydon Voluntary Sector Alliance (CVA)	Kingston Health and Care Forum (KVA)	Richmond Health & Well Being Network (RCVS)	Wandsworth VS Forum (WCA)	Sutton Voluntary Sector Forum (CAS)	Involve Forum (MC)
	Croydon Mental Health Alliance (CVA)	Kingston VS Forum (KVA)	Trustee network (RCVS)	Children and young people Network (WCA)	Race Equality Group (CAS)	Health & Social Care Forum (MC)
	Croydon Youth Consortium (CVA)		Volunteer Coordinators Forum (RCVS)			
	Croydon's Food Partnership (CVA)	Good Food Group (Kingston, KVA)	CEO Network (RCVS)	Health and Wellbeing Engagement Group (WCA)	Anti-poverty Forum (CAS)	Youth Partnership (MC)
	Volunteer Managers Forum (CVA)	CEO group (Kingston, KVA)	Food partnership (RCVS)	Voluntary Involving Organisations Forum (WCA)		
	Local Community Partnerships (LA & VCSE, CVA)		Richmond Mental Health & Wellbeing Alliance (LA & VCSE)	Mental Health Providers Forum (CEN)		
	CEO group (CVA)		Richmond Care and Support Partnership (LA & VCSE)	BME Mental Health Forum (CEN)		
VCS Leadership Board (One Croydon)						

SWL VCSE Alliance Director

Integrated Care Board

Integrated Care Partnership Board

Key:
 CAS: Community Action Sutton
 CEN: Community Empowerment Network
 CVA: Croydon Voluntary Action
 LKVA: Kingston Voluntary Action
 LA: Local Authority
 MC: Merton Connected
 RCVS: Richmond CVS
 WCA: Wandsworth Care Alliance

Context: Local plans in NHS South West London



NHS Joint Forward Plan
Our five-year plan for the NHS in South West London describes how NHS services will meet our populations needs and deliver NHS commitments. The joint plan across all NHS partners in South West London addresses our four core purposes and details the shared delivery plans for our strategic priorities.



Integrated Care Partnership Strategy

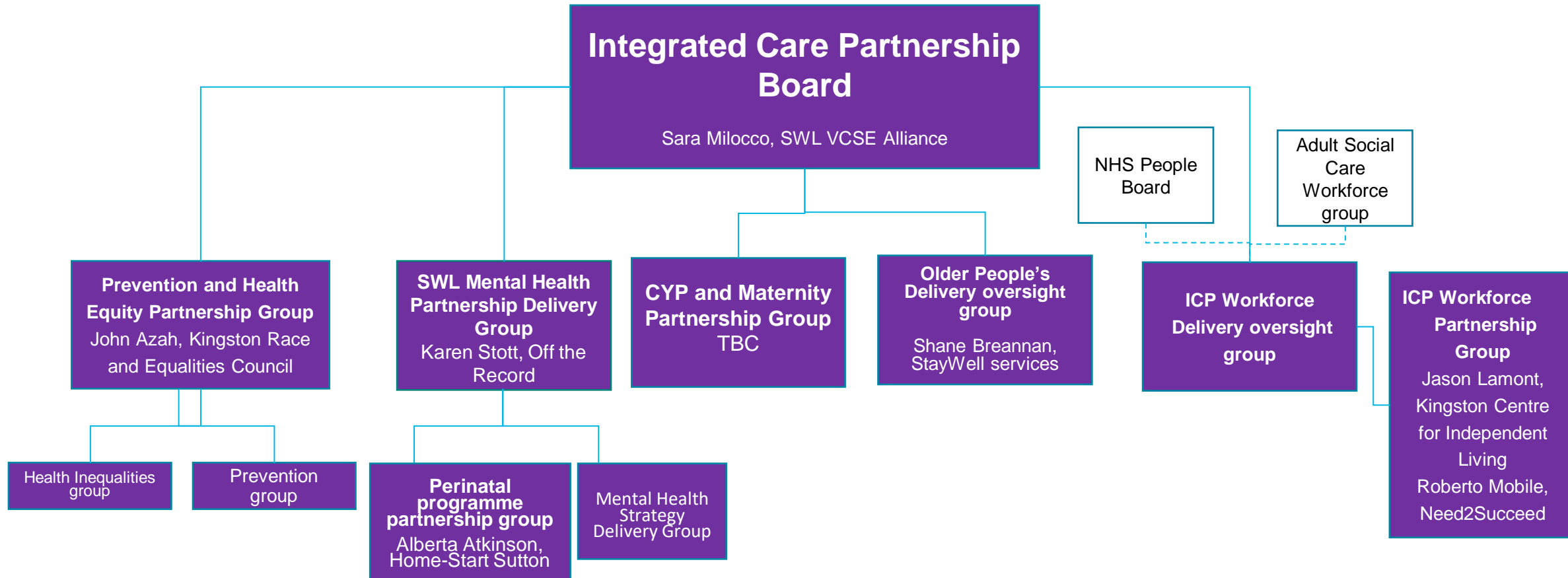
A shared strategy for health and care – the NHS, local authorities, the voluntary and community sector and Healthwatch partners. The strategy includes our health and care needs assessment, the views of local people, and our collective actions to achieve the strategic priorities for our partnership.

You can read our [Joint Forward Plan](#) on our website.

You can read our [Integrated Care Partnership Strategy](#) on our website.

Both of these sister documents describe our future priorities for health and care in South West London build on engagement with our local people, communities and our partners. A report outlining [insight from people and communities](#) details a range of findings from recent health and care engagement conducted in the six boroughs that are covered by the South West London.

Governance for Integrated Care Partnership delivery workstreams



Other cross cutting reps:

Kate White, Kingston Voluntary Action (Superhighways) - SWL ICS Digital Board

Our representatives for mental health



Chas De Swiet joined Sound Minds as CEO in 2022. Chas is well known in the user/survivor movement both as an advocate around mental health issues and an arts professional. His previous roles include Disability Development Officer for the Arts Council (South East) and Head of Operations at Mental Health Media. He has also worked in arts and mental health roles for Core Arts and Creative Routes. Most recently he has been Executive Director of Filmpro. Chas has a parallel path as an artist, mainly working with sound and music. His musical progression has been from a classical violinist through to a world music and ambient DJ, and then on to playing in bands and producing music for film, dance, theatre and events.

Contact Chas: staff@soundminds.co.uk



Karen Stott is the Director of Off the Record Youth Counselling Croydon, Sutton and Merton. She has worked in children and young people's mental health services for almost 30 years and she is very experienced at representing the VCS on strategic boards. She has a strong commitment to ensuring our voices and perspectives (and those of the children, young people and families with whom we work) are kept to the forefront in strategic discussions and decisions.

Contact Karen: karenstott@talkofftherecord.org

Useful reports – South West London



Our Mental Health Strategy - NHS South West London

[Our Mental Health Strategy for South West London - NHS South West London Integrated Care Board \(icb.nhs.uk\)](https://www.nhs.uk/our-mental-health-strategy-for-south-west-london/)

Healthwatch Croydon

Croydon young people's mental health insight – Final report June 2023 [PowerPoint Presentation \(healthwatchcroydon.co.uk\)](https://www.healthwatchcroydon.co.uk/)

Shortlisted for helping Black African and Black Caribbean communities co-design new mental health and wellbeing services in line with their specific views and experiences. <https://www.healthwatchcroydon.co.uk/wp-content/uploads/2019/09/Insights-from-the-BME-community-about-wellness-and-services-to-support-this-1-1.pdf>

Healthwatch Wandsworth perinatal mental health reports

<https://www.healthwatchwandsworth.co.uk/report/2021-05-26/experiences-perinatal-mental-health-wandsworth>

[Perinatal mental health experiences of our diverse borough | Healthwatch Wandsworth](#)

Healthwatch Sutton

Examines children's mental health pre- and post- the COVID 19 pandemic in Sutton

<https://www.healthwatchsutton.org.uk/healthwatch-sutton-reports/2023-10-03/report-childrens-mental-health-worse-covid>

Enough is Enough - Wandsworth report on inequalities in Mental Health services

[Hard-hitting report tackles ongoing health inequalities in mental health services - Wandsworth Borough Council](#)

SWL ICP Needs analysis [South West London Integrated Care Partnership needs analysis and strategy preparation 2023 - South West London ICS](#)

SWL ICP Strategy [Integrated Care Partnership Strategy - South West London ICS](#)



Mental Health in South West London

Strategy and partnership working

Amy Scammell, Chief Strategy
Officer, SWLSTG

Developing the SWL MH Strategy

Mental health is a priority for south west London. In early 2022 the SWL ICS commissioned a new mental health strategy. During 2022/23, the Trust worked collaboratively with system partners to develop this.

The strategy acts as a focus for us to identify priorities, respond to challenges, drive forward transformation and address population health needs in collaboration with service users, stakeholders and partners. We developed the strategy through a number of steps:



We are now reaching the end of the first year of delivery – there is much work to do!

We learned about our system...

We have key challenges to address

- Demand, acuity and complexity has increased through and since the pandemic.
- We are struggling to recruit and retain our workforce.
- Spend on mental health is lower in SWL than in other areas.
- There are gaps in our pathways and our delivery models and service performance vary by borough.
- We do not have much early support in place.

We have a diverse population with varied needs

- Ethnic diversity varies across SWL an some groups are over/ under represented in services.
- Wider determinants of health and wellbeing such as educational attainment, employment, stability of housing and income levels vary across SWL.
- Social challenges such as loneliness, isolation and alcohol misuse exist.
- Presenting needs vary across our population



We heard what matters to local people...

We have carried out engagement activities with service users, carers, stakeholders and partners. Our public survey received nearly 1,000 responses and we held face to face or virtual meetings with stakeholder groups. Below are some of the key reflections from this work.

Waiting times are too long.

More community support is needed as much for prevention of illness as is it for supporting post-discharge.

Services across health, social care and voluntary sector need to work better together .

We need to focus on prevention and early support and take account of wider wellbeing.

A major challenge in accessing support was stigma or shame.

People need to know what services exist and how to access them. It is confusing at present.

Many people seek support from friends & family before seeking NHS help.

Carers need more support.

Our Strategy themes



South West London

The Strategy aims to increase prevention and support, focus on CYP needs, increase equity of access, experience and outcomes for all SW Londoners – reducing unwarranted variation and ensuring a fair and sustainable allocation of resources, develop our workforce and increase holistic support around physical and health care needs together.

We have committed to co-delivery with residents, service users and partners.

The Strategy work is divided into 4 main themes:

1. Prevention and early support including:

- a) Support for children and young people and families
- b) Healthy environments
- c) Mental health literacy and reducing stigma

2. Bio-psycho-social model including:

- a) Physical healthcare for people with SMI and mental health support for people with physical health care conditions
- b) Neighbourhood teams & integration
- c) Complex needs & co-occurring issues

3. Inequalities including

- a) At risk communities
- b) Unwarranted variation

4. Timely access including:

- a) Least restrictive care & recovery
- b) Waiting times
- c) Transitions
- d) Discharge



What are we delivering?

Year 1 – 2023/24

- This has been our first year for delivery!
- We have focused on transforming our community MH services, implementing additional support for CYP, extending our perinatal services, and better understanding how we use our MH investment.

We are setting year 2 (2024/25) priorities now. The initial areas being considered are:

1. Developing core offers for (a) CYP mental health and (b) adults with SMI across all SWL boroughs

2. Improve the connection of MH service to integrated neighbourhood teams

3. Support the South London Listens programme to strengthen community networks and deliver change for our population

4. Make plans for improving support for people with complex needs

5. Develop an understanding of healthy environments and how to promote and expand these

6. Deliver mental health campaigns to support reduction in stigma and increase in mental health literacy

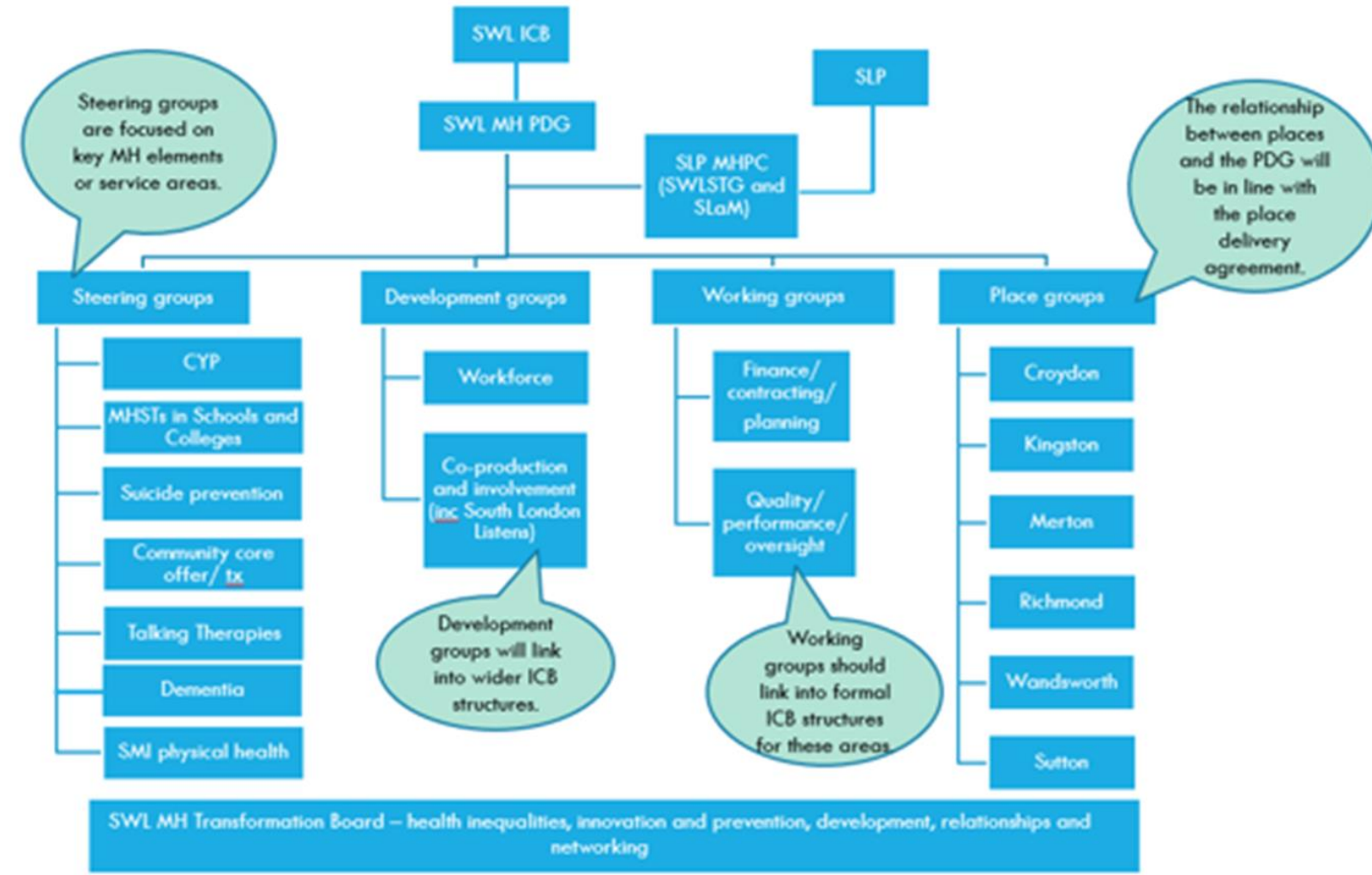


How we work in SWL

We are committed to working as a partnership in SWL. We have a MH Partnership Delivery Group (PDG) which meets once a month to develop relationships, to oversee Strategy delivery and to support the development of key MH work programmes.

This group includes representation from:

- SWL ICB
- The 6 SWL places
- The 2 MH trusts serving SWL (South West London and St George's and South London and the Maudsley)
- Local authorities (adults' and children's services)
- The VCSE sector
- Lived experience members

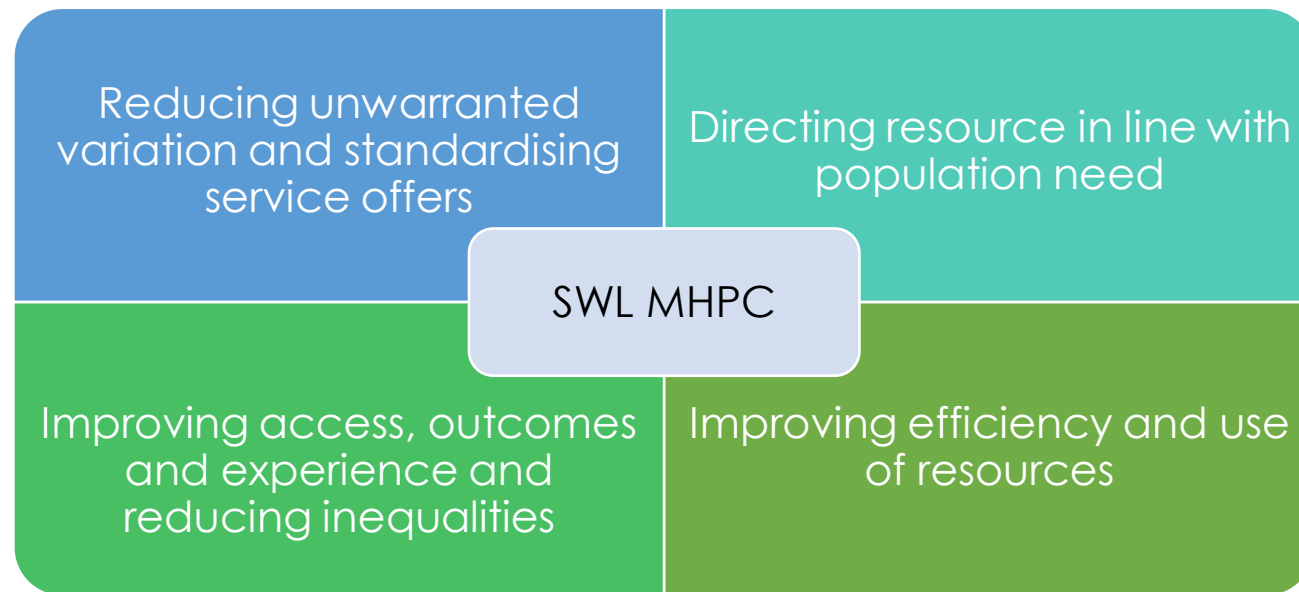


The SWL MH Provider Collaborative



South West London

In SWL, we are working together between SWLStG and SLaM to develop a SWL MH Provider Collaborative for MH services. This involves the trusts working together with the aim of:



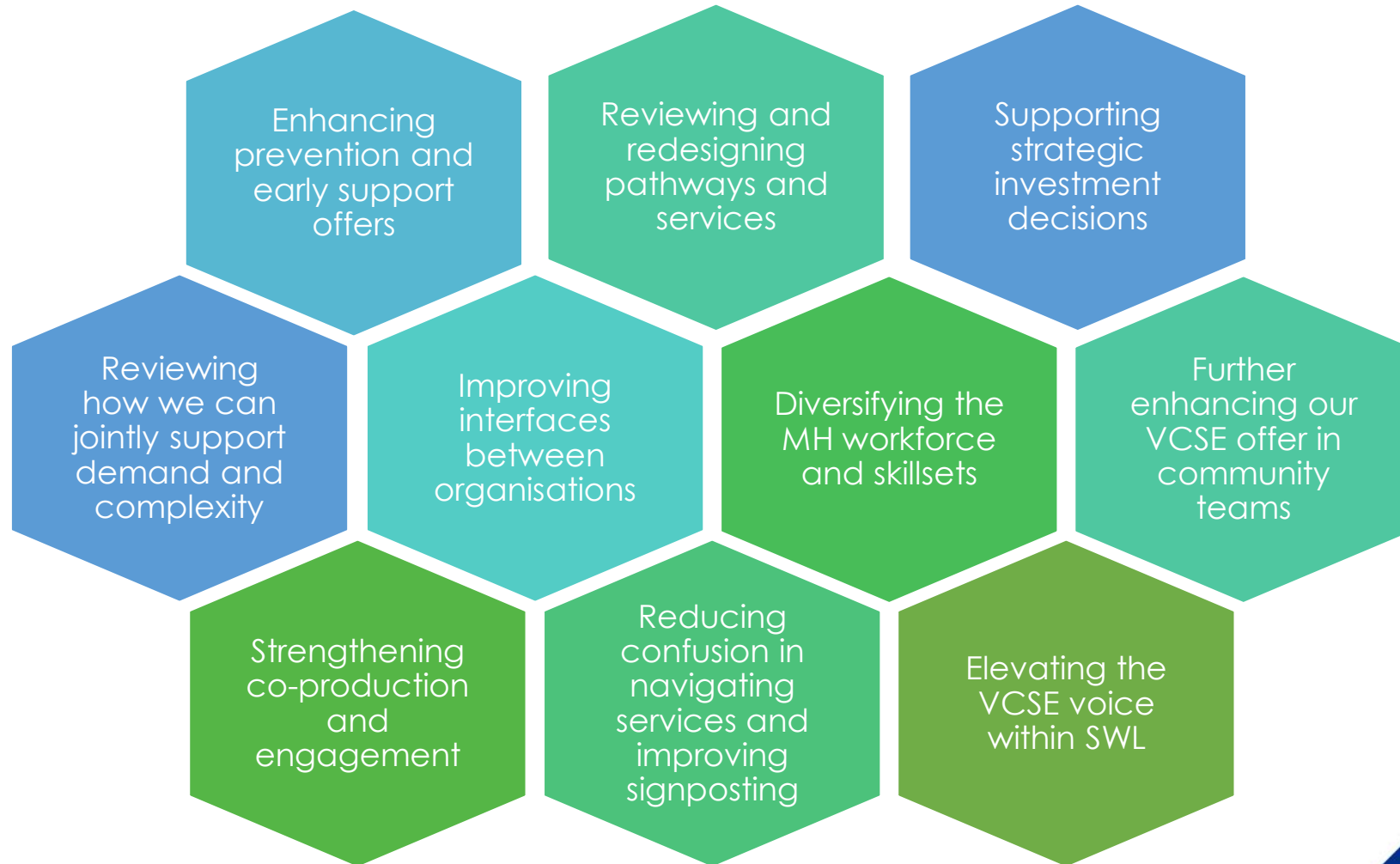
This builds on existing partnership work already in place for MH across south London through the South London MH and Community Partnership (SLP), which is a collaboration of the 3 SWL MH Trusts (SWLStG, SLaM and Oxleas). SLP currently focuses on a range of very specialised services (such as CAMHS inpatient beds).

Opportunities for joint working with VCSE partners



South West London

We are keen to strengthen how we work with VCSE partners as we believe this will significantly enhance our ability to deliver on MH ambitions for SWL. Examples we have thought of so far include:



How do we work together through the Alliance reps?

1. What key messages would you like to raise through your representatives?

2. What views would you like represented?

3. How do we make the rep system sustainable and robust?

(e.g. simple ways to get in touch, be kept informed, how do people want that information flow, is there a model we can suggest)

Please move to your borough table...

How does the VCSE sector want to move forward in partnership with the NHS and wider Integrated Care Partnership?

1. What are the opportunities?
2. What good practice examples we should be looking at?
3. How do we connect Place into SWL in practice?

APPENDIX: Further information



What are Integrated Care Systems?



Integrated Care Systems are partnerships of organisations that come together to plan and deliver joined up health and care services to improve the lives of people in their area. They will be responsible for how health and care is planned, paid for and delivered.

ICSs have four key purposes:

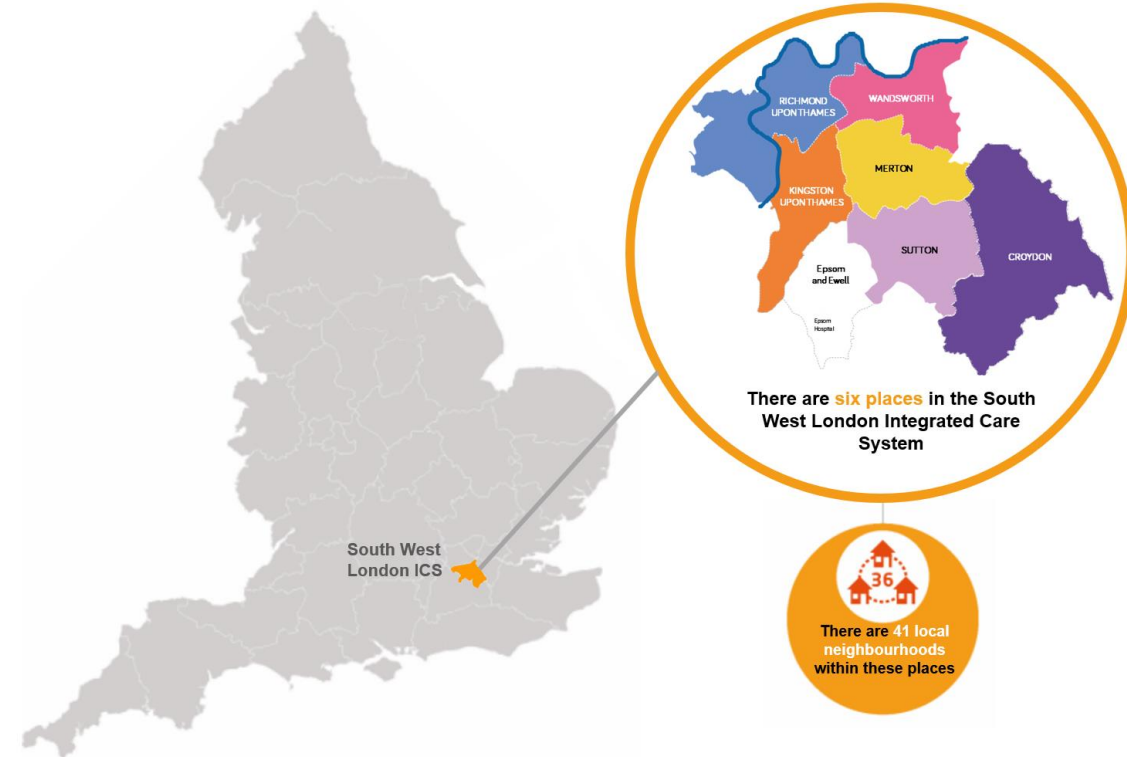
1. **improving outcomes** in population health and healthcare
2. tackling **inequalities** in outcomes, experience and access
3. enhancing **productivity** and value for money
4. supporting broader **social and economic development**

South West London Integrated Care System

Bring together NHS organisations, councils, Healthwatch, charities, community and voluntary organisations to improve local health and care services and to improve the health and wellbeing of local people.

SWL ICS is made up of six 'Places' – Croydon, Kingston, Merton, Richmond, Sutton and Wandsworth.

Place-based partnerships lead the detailed design and delivery of integrated services across their localities and neighbourhoods.



ICB and ICP Board meetings

NHS South West London Integrated Care Board (ICB) met in Wimbledon on Wednesday 17 January 2024

The ICB Board is the senior decision-making forum for the ICB and is collectively accountable for the performance of the ICB's functions.

In January, the ICB Board discussed:

- Workforce
- Community engagement

And received updates on

- Finance,
- Quality and oversight, and
- Remuneration

[You can watch the meeting here](#)



South West London Integrated Care Partnership (ICP) met in Wimbledon on Wednesday 24 January 2024

The ICP is a committee that brings together health and care partners to develop a strategy to improve health and wellbeing in South West London.

In January, the ICP Board discussed:

- Delivery of the South West London ICP Strategy
- Prevention and health inequalities
- Developing the Anti Racist Framework

[You can watch the meeting here](#)



All ICB and ICP meetings are live streamed and recorded so you can watch or listen to them after. You can find out more about our upcoming meetings and watch previous meeting on the websites below:

[South West London ICS events-Integrated Care Partnership meeting in public](#)

[NHS South West London Integrated Care Board events-ICB meeting](#)