

Local Voluntary Partnerships (LVPs) – Update

- LVPs are locality based partnerships between voluntary and community sector organisations to delivery defined outcomes each year.
- 6 x LVPs will be formed of delivery and non-delivery partners
- LVPs will define the specific pilot/s under social isolation and primary care mental health support in each of the initial partnership bids.
- Delivery partners will be selected as required by the defined outcomes for 2018/19 – social isolation and mental health pilot/s
- Non-delivery partners will be formed of infrastructure organisations
- MH partner/s will be selected on the basis of organisations' ability to deliver the Primary Care MH support pilot
- LVPs will discuss and propose a single Directory of services, (subject to a e-market platform acquisition by the Council), and ensure that it is accessible to public
- Locality based Point of Access & Information will be delivered in 2 phases. Phase 1 will be delivered through Advice Service Croydon Contract. Phase 2 will be delivered through LVPs proposals.
- Following local gap analysis, each LVP will deliver a proposal for 2019/20 delivery. Funding will be available through a streamlined grants process, subject to approval.
- LVPs will discuss the feasibility of a Community Exchange System in Croydon

Total LVPs Funding 2018/19	£TBCk
Recurrent Funding 2018/19	£228k
Non-recurrent Funding 2018/19	£TBC
Recurrent Funding Breakdown	
LVPs support	£70k
Points of access & information	£78k
Locality Delivery Fund	£80k
Non-recurrent Funding Breakdown	
Social Isolation Pilot/s	£TBC
Mental Health Pilot/s	£TBC

Mental Health Support Pilots – *under Local Voluntary Partnerships (LVPs)*

Mental Health Pilot/s (2018/19)

New models of Primary Care Mental Health (PCMH) in London are focusing on joining-up mental health and social care. Such development represents a significant opportunity for individuals working within different areas of mental health care to share knowledge and benefit from best-practice expertise they can offer each other. Additionally, new models of PCMH represent a significant opportunity to include voluntary and community sector's expertise and knowledge in dealing with individuals with mental health issues.

In Croydon,

- 18,792 people aged 18 and over registered with a Croydon GP are diagnosed with depression (2016/17).
- 84% of Croydon GPs have seen an increase in depression prevalence between 2015/16 and 2016/17
- 4,506 people registered with a Croydon GP are diagnosed with a severe mental illness (2016/17).
- 56% of all Croydon GPs have seen an increase in severe mental illness prevalence between 2015/16 and 2016/17

Delivery Requirements

The LVP partnerships will include MH partner/s based on their ability to deliver a pilot project for low level mental health needs for over 65s in the each network. The project is expected to work closely with the relevant Integrated Community Network and will have clear pathways with Huddles and PICs service.

The specific project itself in each network will be defined by the partnerships in their bid proposals and must contain:

- Service specification for each pilot detailing context, evidence base, existing provision (*if applicable*), aims and objectives, target cohort, referral criteria, referral pathways, delivery structure / delivery partners and interdependencies with other services.
- Clear links with respective ICN huddles and PICs service
- Operational governance of pilots within LVPs
- Proposed allocation of Locality Delivery Fund to partners, if applicable

Local Voluntary Partnerships Model

Strategic Vision

Alignment with Social Prescribing Model

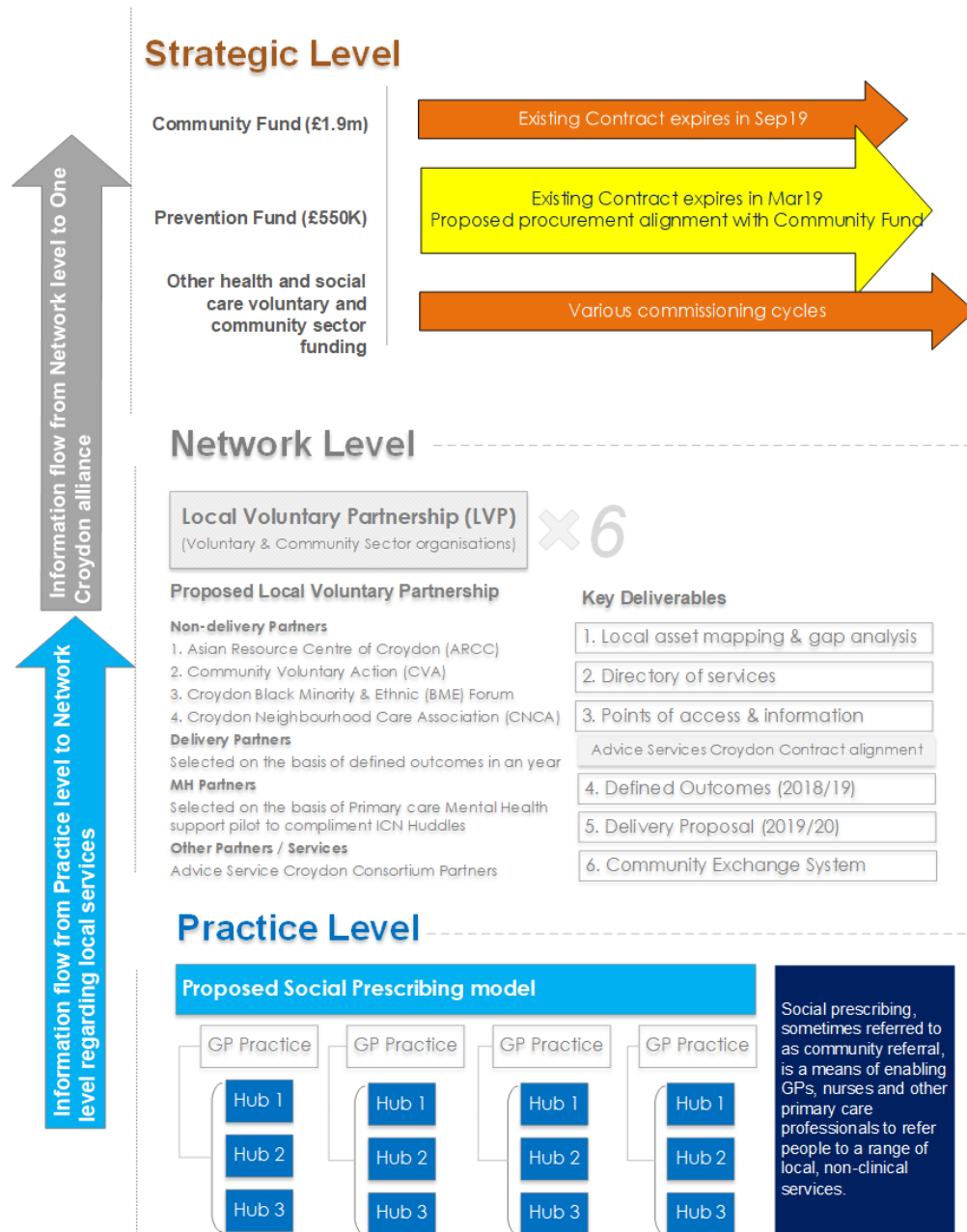


Note:

The funding for the development of LVPs is over and above the existing commissioned services under community fund and prevention fund.

The social prescribing model is funded through GP Forward View Funding and is only linked with LVPs to highlight the overall model and flow of information.

Models in other networks may differ from the Thornton Health social prescribing model in structure and application due to different needs and demographics in each network.



Key Points:

- LVPs will bring the voluntary and community sector together and maximise its potential
- Enable the building and sharing of knowledge, expertise and resource across the third sector
- Enable access to harder to reach groups and communities, including socially isolated and disability groups
- Connect people, places and services in the community to enable people to live healthy, active and independent lives for as long as possible
- Enable de-medicalisation of interventions, whilst creating a culture of self-care that promote preventative lifestyles and independence in Croydon
- Enable greater value for public spending
- Become the main conduit of information on local needs to inform commissioning intentions
- The proposed timeline on the left highlights some of the commissioning cycles informed by the LVPs

Key Points:

- Each LVP will be formed of delivery and non-delivery partners
- Delivery partners will be selected as required by the defined outcomes for 2018/19 – social isolation pilot
- Non-delivery partners will be formed of infrastructure organisations
- MH partner/s will be based on Primary Care MH support pilot
- LVPs will discuss and propose a single Directory of services, (subject to a e-market platform acquisition by the Council), and ensure that it is accessible to public
- Locality based Point of Access & Information will be delivered in 2 phases. Phase 1 will be delivered through Advice Service Croydon Contract. Phase 2 will be delivered through LVPs discussions. (see LVP operational & delivery model for details)
- Following local gap analysis, each LVP will deliver a proposal for 2019/20 delivery.
- LVPs will discuss the feasibility of a Community Exchange System in Croydon

Key Points:

- Each Practice could have a no. of hubs. (Hub being a physical space, for example, a church, leisure centre etc.)
- Each hub could hold multiple sessions throughout the day, held by various voluntary and community organisations.
- Daily timetable of each hub will be available on Practice websites and will feed into borough wide Croydon voluntary and community sector online directory of services.
- Practices will be free to use each other's hubs.
- Information regarding existing services provided to local voluntary partnership.

LVPs Governance

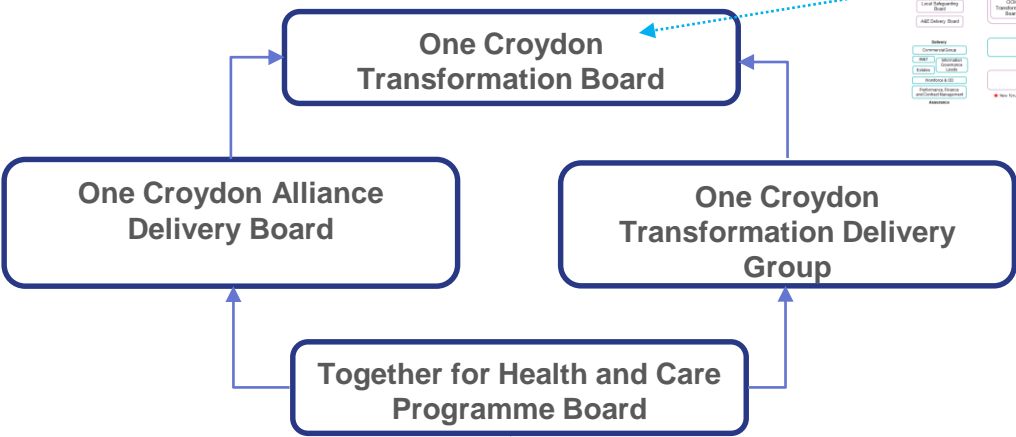


The LVPs will provide progress reports (for information only) to:

- ICN Programme Delivery Group
- Local Strategic Partnership
- Health and Well being Board

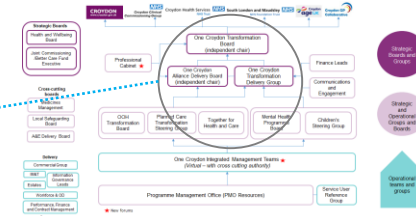
Croydon's LSP brings together the main agencies responsible for health, housing, police, employment and education, with representatives of the voluntary, community, faith and business sectors, which will be responsible for delivery. The LSP provides coordinated leadership committed to tackling complex cross-cutting issues and improving the economic, social and environmental wellbeing of our residents and communities.

The LSP also provides a unified voice in making the case for a fair funding settlement for Croydon and the devolution of powers to the borough.



- Mayday Network Local Voluntary Partnership
- Thornton Heath Network Local Voluntary Partnership
- East Croydon Network Local Voluntary Partnership
- Purley Network Local Voluntary Partnership
- New Addington & Selsdon Network Local Voluntary Partnership
- Woodside & Shirley Network Local Voluntary Partnership

Together for Health and Care Transformation Board will be responsible for monitoring and providing strategic direction to local voluntary partnerships. The group will also help develop the LVPs.



Local Voluntary Partnerships

Estimated Procurement and Delivery Timeline

Subject to Cabinet approval and Tender process

Total available funding and detailed specification to be released through procurement process

